



BOATING PUBLIC NOTICE

Crescent City Harbor Entrance Safety Zone

The Coast Guard has established a safety zone in the navigable waters of the Crescent City Harbor Channel to promote the navigational safety of all vessels near Crescent City, CA, when extreme environmental conditions are present through March 31, 2019. The safety zone prohibits vessels from transiting the Crescent City Harbor Entrance Channel as a result of extreme environmental conditions.

During times of extreme environmental conditions the temporary safety zone applies to the navigable waters of the Crescent City Harbor Entrance Channel, as defined by the area contained seaward of the line originating in approximate position 41°44'36"N, 124°11'18"W bearing 237°T and extending out to 1 NM of the Line of Demarcation in Crescent City, CA. This safety zone will be enforced when on scene conditions reach 20 feet breaking seas or as the Captain of the Port determines that the on scene environmental conditions are hazardous and unsafe for vessel transits, as announced via Broadcast Notice to Mariners.

Any vessel requesting permission to transit the safety zone during times of enforcement shall contact Station Humboldt Bay on VHF-FM channel 16 or at (707) 443-2213 between 6:30 a.m. and 10 p.m., or to Sector Humboldt Bay on VHF-FM channel 16 or at (707) 839-6113 between 10 p.m. and 6:30 a.m.

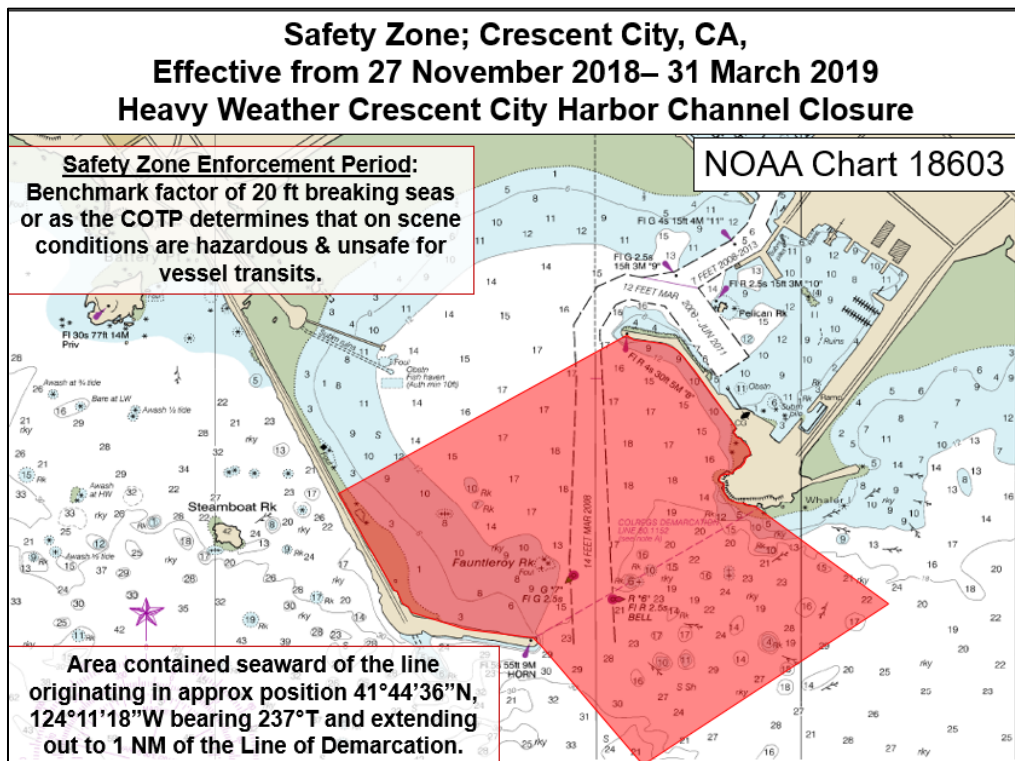


Chart is not for navigational purposes.

For more information on boating safety and required and recommended safety equipment, please visit www.uscboating.org.

For more information on weather conditions, please visit www.weather.gov.